

## Homework 1

### Perspectives on the Evolution of Structures

#### (Writing Assignment #1)

Keep up on your readings, particularly Tower and the Bridge!

Select a significant structure that you have personally visited (perhaps from your hometown?) for this assignment. Collect some basic facts and formulate some thoughts about this structure.

Provide the following in a nicely typed up document not more than 1 page long + drawing:

- picture of your structure
- name, location and all other basic facts you can find – include sources (web addresses, personal communication, magazine articles for your facts)
- a few sentences on why you selected this structure
- preliminary analysis/criticism related to the 3 S's or 3 E's
- an informal reference list (e.g. private communication with family if you pick a structure from home, web references etc.)
- make sure to list structures you would compare this structure against
- and on the second page add an annotated line sketch of your structure

Please follow the formatting shown on the following page

The homework will be graded on the clarity of presentation, the depth of your thoughts, the extent to which you provide some meaningful details and supporting facts about your structure and if you provide your own line drawings(s).

Also, I have to admit the creativity of your choice of structure matters as well – it takes extra thought and work to select a unique structure. In trying to begin analysis and criticism, strive to be as *specific as possible*, discuss details of the structure. Think of the way we have discussed details of structural form in the lectures.

One final note, although the course has begun with a discussion of *monuments*, it is generally more appropriate to pick a bridge, large hall or stadium, or a mid- to high-rise building. Monuments are unique, and with the exception of those highlighted in the course can be difficult to critique. Small structures (houses) etc. are also difficult to critique unless they have unique structural demands (e.g. Fallingwater).

Consider using such resources as structurae: <http://en.structurae.de/> or other resources linked from the course web page to help you find an interesting structure. (Google images and google earth can be a fine start to, make sure to attribute anything you take even from your random web trawling.)

Example template follows.

Perspectives on the Evolution of Structures  
Assignment 1  
*Your Name Here*



Bank of Oklahoma Tower  
Tulsa, Oklahoma  
Height...  
Year Built...  
\$...

Structures I would compare with

Please list structures that would help you form a basis for comparison with the structure you have selected. You may want to peruse the pictures in the Tower and the Bridge or go online and look at <http://en.structurae.de/> to get additional ideas for comparison structures. (This building was a precursor to the New York City World Trade Center towers destroyed in 9/11.)

Why I like this structure

Please provide a personal account of why you selected this structure. What do you find appealing about the structure, why did you choose it over other structures you considered. You are being asked to express your opinion, not necessarily supported by fact at this point. Please provide at least a few sentences in response to this question.

Social or Economy

insert your facts and thoughts here – phrases are fine – just get your ideas down

Science or Efficiency

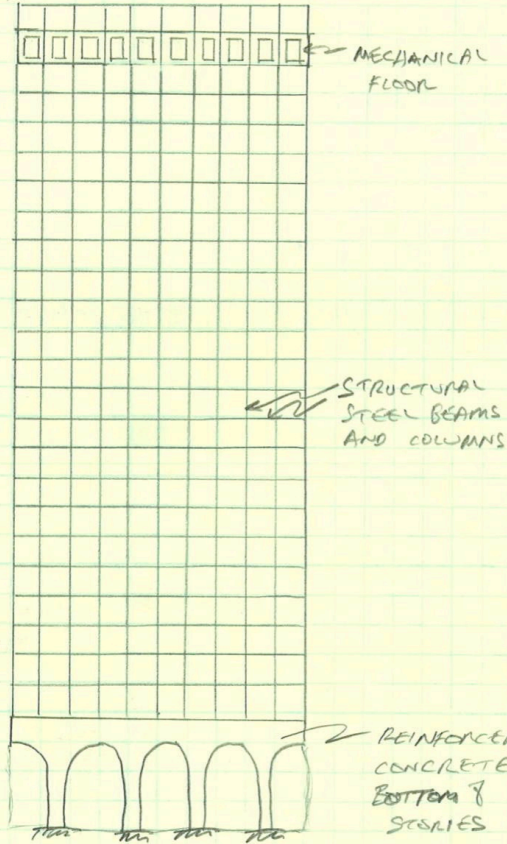
insert your facts and thoughts here – phrases are fine – just get your ideas down

Symbolic or Elegance

insert your facts and thoughts here – phrases are fine – just get your ideas down

References

Picture taken by Ben Schafer in January of 2004; Tulsa World article; Web references..



NOT TO SCALE

ELEVATION

BWS